



Stiftung Liebenau

**In our middle – the individual**





Welcome to Liebenau  
and to over 100  
other locations in Europe.



# Stiftung Liebenau

## A quick look

The Stiftung Liebenau empowers individuals who need our specific support and guidance to be as independent as they possible can and to participate and be included in society today.

We work in the areas of education and learning, participation and families, health care, care and living support and services and products. Whether it is in facilities we run or the services we provide, we see ourselves as partners dedicated to helping people help themselves. Thanks to our extensive range of support options we can design individual solutions based on individual needs.

Our actions are guided by Christian-Catholic principles, professional working practices and sustainable business economics.

Founded in 1870, the Stiftung Liebenau is a non-profit organization (NPO). We have facilities in Germany, Austria, Italy, Switzerland, Bulgaria and Slovakia.



## What we do

# Stiftung Liebenau Care and Living Support

We are here for individuals who need our specialized support. We help elderly individuals to live their lives with dignity and as independently as possible.

We offer traditional residential care facilities, sheltered housing with ties to residential facilities, homecare support services, and hospice care. Our services and staff are friendly and uncomplicated. Our houses are comfortable and lively parts of the community and offer a place where people can meet and share quality time together.

We offer a comprehensive care portfolio to cover all areas of help including and especially help for people with dementia, this enables us to offer individual solutions for individual needs. We are also thankfully supported in our work by many kind voluntary helpers.

As with everything we do our core value remains constant:  
In our middle – the individual.

## What we can offer

Our diverse range of nursing care is based on the needs of elderly people and their families, looking for solutions to problems caused with ageing. Our care staff members are particularly trained in the care of individuals with dementia.

Together with residential and care communities we also offer a wide range of different housing alternatives as well as short term care support and intensive home care support.

With our outpatient services we can provide extra help with homecare support to enable people to live longer in their own homes.







Aging with dignity  
and as much independence  
as possible.





Empowering participation, dependable support for families.



# Stiftung Liebenau

## Participation and Families

Everyone has the right to an individual, self-determined life and to participate in society. We work together with people who need our help as dependable partners. Together with them and their families, we develop personal life perspectives and provide the necessary help for the best possible participation in society. This applies to all areas of life, housing, education and training, work, leisure and culture, in all our facilities, in our community based houses or in our specialist care centres, all, are focused on being "places for living life". We provide individual answers to the most diverse and complicated needs for help and support in complex circumstances.

Our support is also focused on families who are dealing with difficult situations, who have children with serious illness and/or disabilities. With our dependable network, we are reliable for them in the most challenging phases of life. We support children based on their potential and open up opportunities for them to participate. Our support enables families to find a suitable work-life balance.

As with everything we do our core value remains constant:  
In our middle – the individual.

### What we can offer

We offer a varied range of housing models for individuals with disabilities, e.g. residential care, non-residential assisted living, small living communities and community integrated housing.

In our Liebenauer Arbeitswelten we offer a range of different workplaces, satellite workshops and the support from job coaches. Here we can offer individuals with disabilities, physical or social impairment issues, further education, employment, or rehabilitation into to workplace.

In the area of family support there are 60 different offers available from our network orientated towards children, young people and families.





## What we do

# Stiftung Liebenau Health Care

We are here for the individuals who need our specialised help and support. We offer complex health care focused on the needs of people with disabilities. This is made up of not only medical but also therapeutic care. We run hospitals, residential facilities and social therapeutic living groups as well as day-care centres and outpatient facilities.

Thanks to our wide range of experience and our comprehensive support networks we can often offer help when others unfortunately cannot. We can tailor treatment to individual needs and we always take a holistic approach to therapies used. We guide and support the individuals entrusted to our care in a coordinated professional care network.

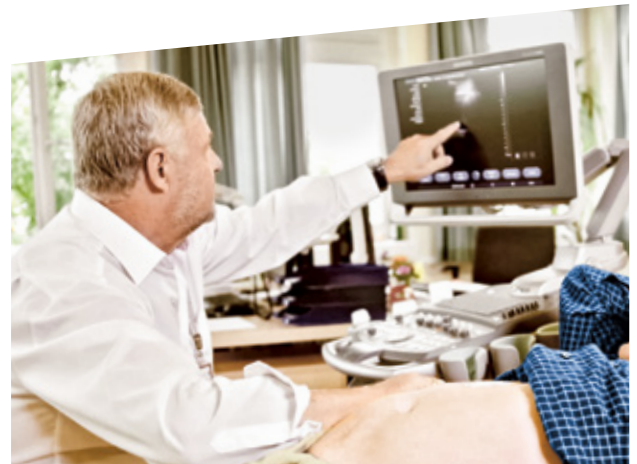
As with everything we do our core value remains constant:  
In our middle – the individual.

## What we can offer

In our specialized hospital St. Lukas-Klinik in Liebenau we have 62 beds made up of a children and young adult psychiatric unit, an adult psychiatric unit and a unit for internal medicine. The hospital works closely with social therapeutic residential groups.

The groups give a home to individuals who need long-term support and guidance. Our outpatient facilities offer not only general medicine and psychiatric help for children and young adults but also neurological gerontopsychiatric and adult psychiatric treatment.

In Stuttgart the Haus St. Damiano offers social therapeutic places for adults with learning disabilities or more complicated impairments. It also runs a daycare centre for adults with disabilities. The Tagesklinik Bernsteinstraße also has a psychiatry unit for children and young adults with intellectual impairments, learning disabilities and severe communication issues.







Medical and therapeutic  
help for individuals  
with disabilities.





Facilitating futures,  
education and training.



# Stiftung Liebenau Education and Learning

We are here for the individuals who need our specific support and assistance. We offer new perspectives and possibilities in the areas of education, employment and a mix of different accommodation models to enable young people to take an active part in working life.

With a complex screening program, a wide spectrum of school and career based training as well as guided forms of accommodation and work, we can find the best solution for every need, together with the young individual. We guide support and offer advice during training with solid professional and practical working knowledge.

As with everything we do our core value remains constant:  
In our middle – the individual.

## What we can offer

Our portfolio for professional training and career guidance is oriented on people with learning difficulties, people with physical disabilities, people with emotional and social impairments, unemployed and those seeking to reenter employment and individuals seeking new qualifications.

We offer a wide range of modern training and production facilities for a wide range of people with different needs.



## What we do

# Stiftung Liebenau Services and Products

People with and without disabilities working together is an integral part of our everyday business.

To make this concept a reality we have created a variety of services and businesses specific to the needs of the Stiftung Liebenau. We offer a wide range of services and produce our own products.

Our portfolio of business and services is open to anyone who wishes to take advantage of them. We offer our customers a high quality service from motivated and qualified reliable staff. Our customers are supporting the work of the Stiftung Liebenau and also the inclusion of individuals with disabilities into our community.

As with everything we do our core value remains constant:  
In our middle – the individual







Quality work,  
inclusion included.



## Stiftung Liebenau within Europe

Starting from her Upper Swabian home the Stiftung Liebenau today has a far greater reach than it did for 150 years. It is internationally active, especially in the German speaking areas of Europe but also in Central and Eastern Europe.

We are motivated by international business opportunities in social welfare and care management. The benefit for us is not only the extension of our professional working practise but also in an intercultural exchange, joint development, forward-facing projects.







# Baden-Wuerttemberg

Bavaria

Switzerland

Austria

Bulgaria

Sofia ■ Burgas ■

Kitschevo ■  
Varna ■

## A look back



### 1870 – 1909

Liebenau, a refuge for people with disabilities and for the “incurably ill”, is founded by Chaplain Adolf Aich and 13 citizens from the town of Tettwang. Three years later, the “Care and Safekeeping institution of Liebenau” is legally registered. It quickly becomes known and valued regionally and nationally. By the end of the 19<sup>th</sup> century there are already more than 400 people living in Liebenau.

### 1910 – 1930

New locations are added and the first school model developed for children and young adults with disabilities. The number of people cared for grows to 900.

### 1940 – 1944

The National Socialists transport 501 residents to Grafeneck and Hadamar where they are murdered. A memorial service is held in Liebenau every year to remind us of this terrible time. Liebenau becomes a detention centre for women and children.

### 1945 – 1967

From 1950 Liebenau is once again independent. Homes and workshops are expanded, a school is created. In 1953 over 1 100 people are living here.

### 1968 – 1994

Residential and working conditions become much more professionally organised. A specialist clinic and a work training centre are founded; the first facilities for elderly care come into being. The institution takes on the name “Stiftung Liebenau”

### 1995 – 2010

The Stiftung Liebenau becomes a holding company with several subsidiaries. New locations in Austria, Switzerland and Bulgaria are added. Cooperation with the Stiftung Hospital zum Heiligen Geist, the Stiftung Helios Leben im Alter and the Fondazione S. Elisabetta begins.





### As of 2010

Care, housing and employment services are increased and, at the same time, also decentralised. Profession and care services become increasingly specialised. Networking with new partners both in and outside Germany becomes increasingly important. New locations are created in Italy and in Slovakia. Around 20 000 people across Europe are being cared for, and supported by, the Stiftung Liebenau.



# Our Values

## Christian-Catholic Principles

The principles that determine our working practise are fundamental anchored in the teachings of Jesus Christ from the New Testament. His compassion and his interaction with those in need in his time is the measure we use to guide us in our work with the people requiring our support today.

His humanity and his reverence for life is our starting point for respectful and positive dealings with people. Jesus's relationship to God as the Father of all things leads us to respect and to value all individuals with truth and honesty. In our thinking and in our actions we try to follow the example Jesus has set for us, as individuals and as an organisation.

## Humanity

### Our View of humanity

The Christian image of humanity dominates our thinking and doing. It is the ethical benchmark by which we measure how we work, the services we provide and our business developments.

### Solutions for the individuals in our care

We are here for people who need our specific help and support. We orientate our holistic help and support on the individuals physical and spiritual needs.

### Our Staff

With their professionalism, expertise and social competence our employees carry out the responsible work that must be done to fulfil our commitments. This deserves our highest respect and strongest support.

### Reliable Partnership

The reliable working partnership between customers, local government departments, funding agencies, business partners and local authorities is the essential element in our business activities.

## Professionalism

### Diversity

From our point of view, in order to find the right solutions for individuals who need our help we must have a diverse range of possible solutions. We offer help in the areas of education and learning, participation and families, health care, care and living support and services and products.

### Individual Solutions

Thanks to our wide range of care and support structures we can construct the appropriate individual solution needed for the person in question. These solutions are constructed with as much involvement from the individual as possible bearing in mind their needs and abilities.

### Community Orientation

Our work is oriented on the idea of a community. We encourage the working together of all parties involved, relations, family and associations including the church and local councils.

## Economics of Business

### Economic Security

The Stiftung Liebenau is an economically sound long-term business partner. As a Non-profit making organization, the finances generated from investment, profits and donations are invested singular to insure the positive future development and security of our services and facilities.

### Business Competence

Thanks to our long and successful business management experience we are a financially sound and well organised reliable partner. We offer our employees and business partners, both domestic and international, a stable and secure, independent business focused on the future.

### Social Return on Investment

Through the work that we do every day, the Stiftung Liebenau also generates a secondary positive economy in the areas, locations and regions where we operate facilities and services.





## Our Core Values

What would the world be without compassion for each other?  
What would life be without help and guidance?  
What would the day be without willingness to be there?

We are here for the individuals who need our special help and support  
We respect their individuality and integrity  
We meet them in partnership, reliable and devote  
We enable them to decide themselves, how they live, as far as possible

What we do we do in respect of our values  
With a deep humanity, based in Christian brotherly love  
With sound working knowledge and individual answers  
With a sound business, that our work lastingly secures

But also with concerns about us, ourselves, and our needs  
In every moment both large and small  
To fulfill our commitment

In our middle – the individual

## Our Vision

We help and support people to individually determine and live their own lives and to participate and be included in society.

## Our Commitment

We are here for the individuals who need our specific help and support.

## Our Key Guide

In our middle – the individual

These words express our fundamental belief in Christian humanity. This is a strong and open pledge we take to the people in our care. It is also a measure of how highly we value our employees who are also the individuals meant in these words.





Diversity,  
professionalism  
and prospects!



## Working at the Stiftung Liebenau

Around 7 000 people work at the Stiftung Liebenau. We offer a variety of employment, development and career opportunities.

In all our working areas, we value a culture of togetherness, openness and friendliness. We offer comprehensive training programs to further qualifications, additional support with health care and pension planning. We have also support systems to help staff to coordinate their occupation and their family life. We offer young people a diverse and dynamic apprenticeship. Every year about 150 choose a secure future working with us. We offer jobs in both social work and business, in the areas of service and in skilled labour.

Voluntary work as well as opportunities for diverse job placements are designed to enable young people to develop and learn about job possibilities in professional care services.

Many people work voluntarily in many different areas of the Stiftung Liebenau. They support the professionals and allow for additional services to be offered for the people we care for. They contribute greatly, allowing a comprehensive care service to run more smoothly for the people who have put their trust in us.

You can find out more about the working world of the Stiftung Liebenau at:  
[www.stiftung-liebenau.de/karriere](http://www.stiftung-liebenau.de/karriere)

### **Akademie Schloss Liebenau**

The Akademie Schloss Liebenau trains not only internal but also external professionals, management and volunteers to develop both professionally and personally. We offer a varied program of further education and training. It includes teaching, nursing, therapy, care, administration and home economics. In addition to professional know-how we also offer spiritual guidance, independent thinking and communication. Together these provide the creative and innovative base required today in our challenging society.

We work with the experiences, strengths and resources of our participants. Our lecturers help support and guide people through their personal learning process, with knowledge transfer, self-reflection and exchange of ideas.





## What we need for an inclusive society

Our founders set the direction we follow. The Stiftung Liebenau is there for individuals who need our help. We share the vision of Jesus of Nazareth, who asked, above all else, what is it that you really need? Our care and support services are of the highest standards; they are constantly measured and are constantly developed. In the future we will focus on the promotion of inclusion and independent living, supporting individuals, with severe single or multiple disabilities, according to their needs. We will also focus on developing new needs based solution for elderly people.

We are very aware of our social responsibility. That is why we are actively involved in reshaping the political framework that governs social politics and we recognise the importance of representing the interests of the individuals in our care.

We also work hard for social awareness within Europe, networking across borders to promote the exchange of ideas and knowledge. To guarantee the independence and security of the Stiftung Liebenau we pay close attention to both the economic and business paths we follow, and also, healthy growth relaying upon sustainable resources.

## The Company Logo

The image that the Stiftung Liebenau uses, comes from a picture about the parable of the Good Samaritan. The image expresses our understanding of the Christian humanitarian principal of brotherly love.











© December 2019

**Stiftung Liebenau**

Siggenweilerstraße 11 · 88074 Meckenbeuren

[www.stiftung-liebenau.com](http://www.stiftung-liebenau.com)